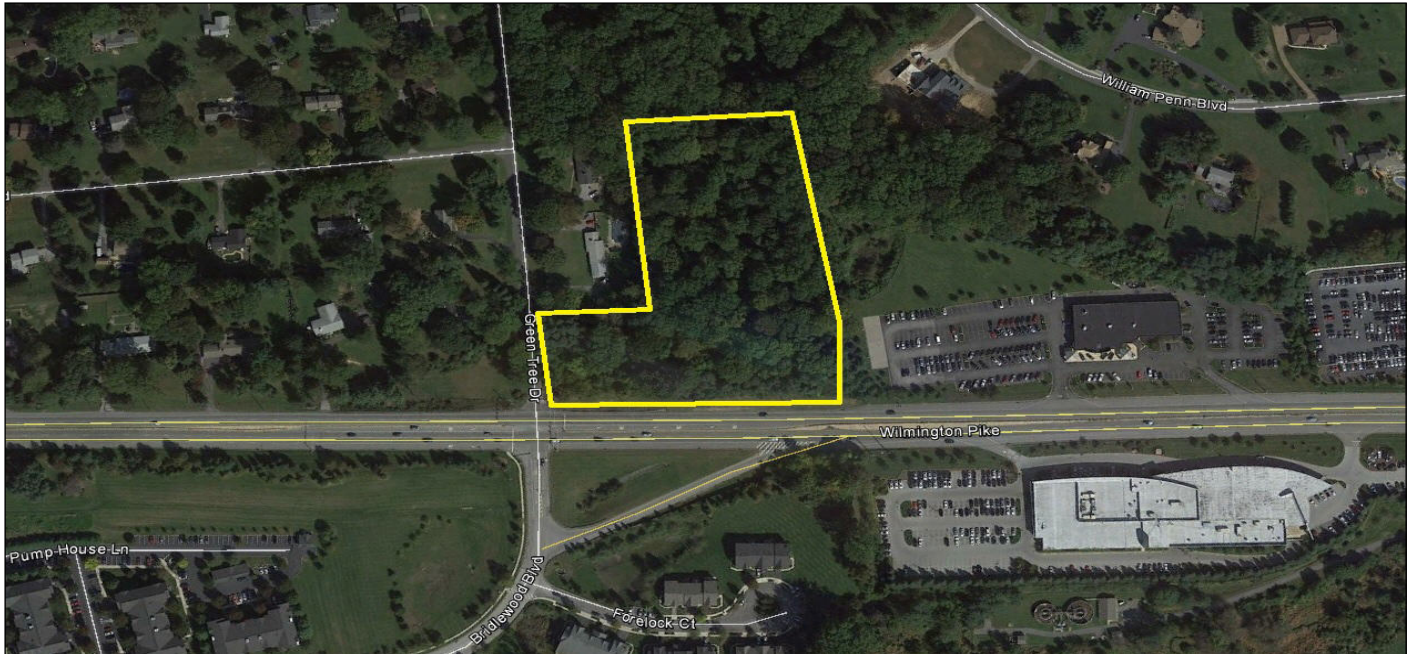




**FIDELITY**  
COMMERCIAL

# FOR SALE

## SIGNALIZED CORNER GREENTREE DRIVE + RT. 202 WEST CHESTER, PA 19382



### Property Highlights

- Acreage: 5.9 acres approx.
- Zoning: Agricultural and Residential District  
Township of Thornbury  
Chester County
- Special Exception uses: Nonprofit club or lodge,  
Church or similar place of worship and schools.
- Located at a signalized intersection on Rt. 202  
and Greentree Drive with great visibility.
- Asking Price: \$4,500,000

### For More Information Contact:

Tom Coyne, Jr.

[tcoynejr@fcrea.com](mailto:tcoynejr@fcrea.com)

(610) 878-2220

No warranty or representation, expressed or implied, is made as to the accuracy of the information contained herein, and same is submitted subject to errors, omissions, change of price, rental or other conditions, withdrawal without notice, and to any special listing conditions, imposed by our principals.

1012 W. 9th Ave, Suite 205 • King of Prussia, PA 19406  
Phone: 610-878-2220 • Fax: 610-878-2222  
[www.fcrea.com](http://www.fcrea.com)